

# Simulaids



## **No. 4003 CPR Recording Manikin** **Instructions for care, use, and maintenance**

June 2011

Product Instructions  
**CPR Recording Manikin**  
**Item No 4003**

The CPR Recording manikin from Simulaids measures compression rate and depth and ventilation peak pressure and peak volume. You may choose to track CPR, compressions, or ventilations. According to recent developments in patient care, ventilation is an extremely important consideration in the survival of a patient in an unconscious state. Over ventilating patients increases their mortality. This manikin offers you appropriate skill development to assist critical patients. The parameters used in these skill sets match AHA standards, but can be adjusted to meet whatever adult values you want to assign in order to satisfy any worldwide protocol.

The product purchase includes:

- Manikin torso
- Mini-laptop
- Power Cord that serves 110 a/c or 220 a/c
- 2 Replacement mouth pieces and 2 replacement lungs
- Instructions



There is no program disc associated with the product. The programming comes installed. If you ever need a copy of the program to reinstall, contact Simulaids at [info@simulaids.com](mailto:info@simulaids.com).

## Setting up the Manikin

Since the programming is installed on the mini-laptop when you receive it, you simply connect the mini-laptop to the power source, plug in the USB cable for the Manikin, and power it up. The program will start automatically. You must have the manikin USB connected before starting the laptop.

### Using with a printer

You may need to install the necessary drivers, i.e., printer drivers. You may download your printer's driver from an appropriate website.



Example of a Hardware Pop-Up Window

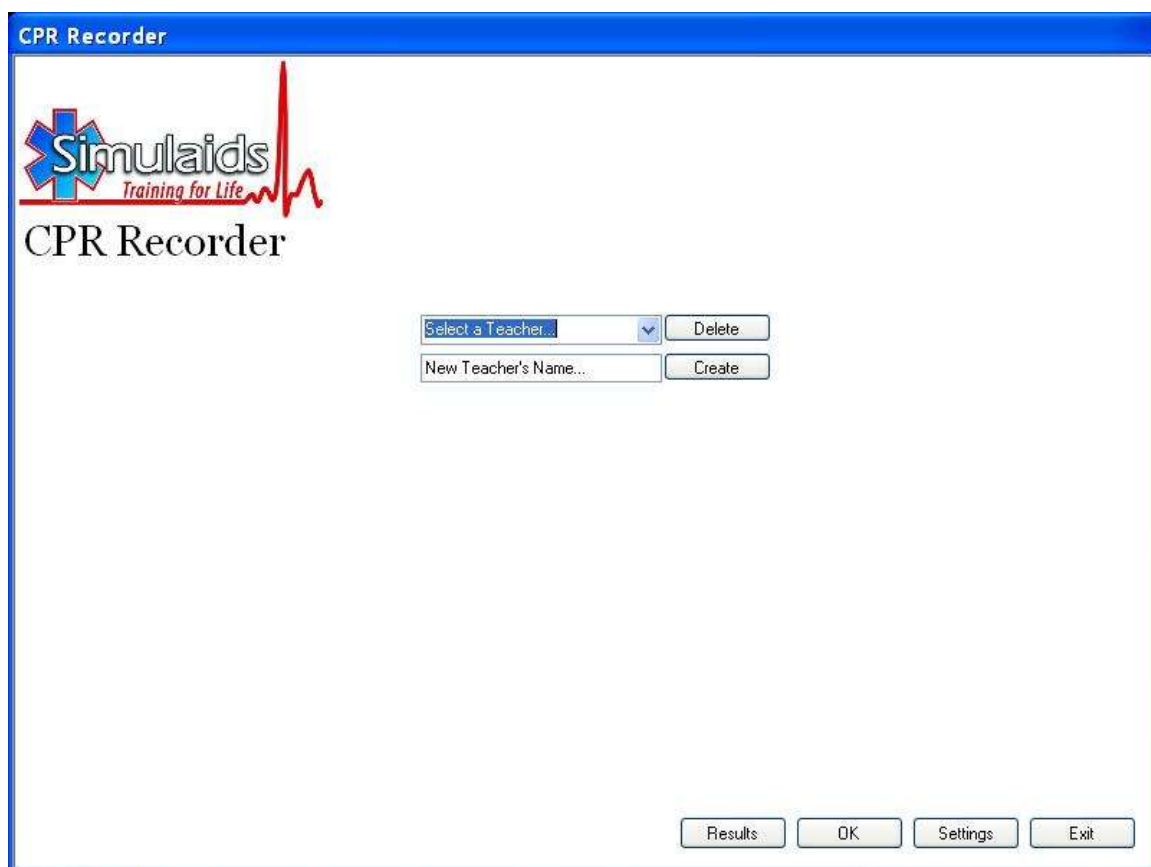
The manikin will function without a printer attached. However, you must have the laptop attached to a printer in order to use the Print function of the product.

1. If you have a newer printer, the laptop program may recognize it and automatically install the driver from the “plug and play” feature.
2. If the laptop does not recognize your printer, load the driver for the printer into the manikin by utilizing your printer's manufacturer's website.
3. The installation of the printer driver should happen automatically; follow the prompts. If it does not, find the driver file and open it manually to start the installation.

There are no batteries associated with the CPR Recording Manikin. The model comes with a 110-220 V system for powering the laptop/manikin, but the local power cord that connects the wall outlet with the equipment must be supplied by the user.

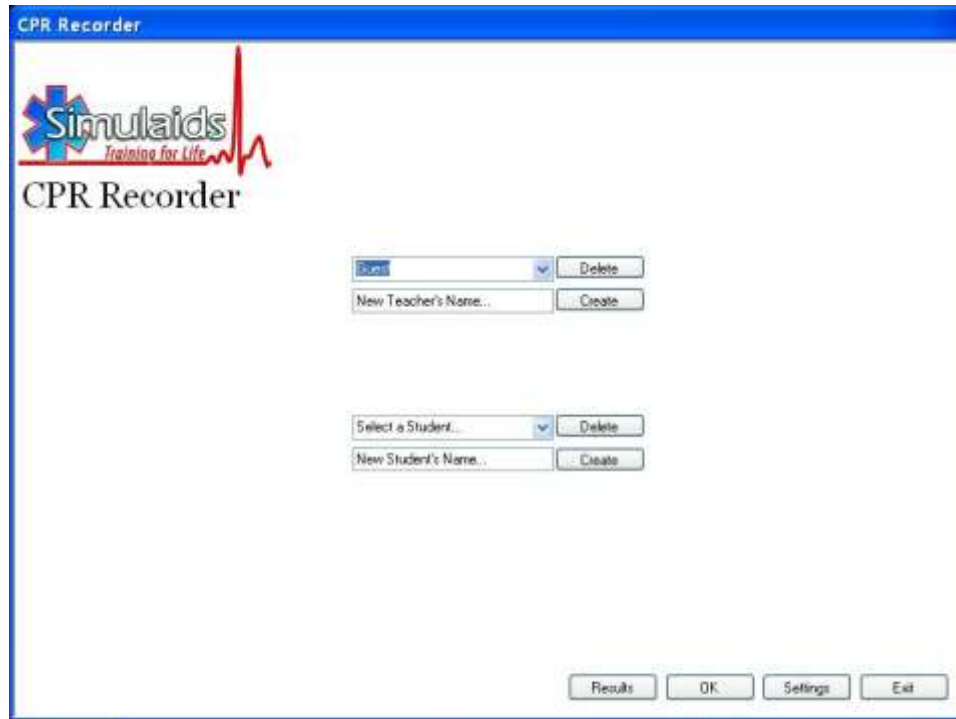
## START UP SCREEN

When the program opens on the mini-laptop, you will be prompted to “Select a teacher”. In the line below this prompt is a place to enter a new teacher name, which you will need to insert prior to continuing. Once you have inserted the teacher’s name, tap the create button. This will install the name in the list above and you can then select that name to activate the program. From then on, you may either enter more teachers’ names or move on to the next feature.



Once you have the teacher chosen from the drop down list you will be taken to the second start up screen as shown below. This secondary

screen addresses the students' names in the same manner as the instructor's names. Simply add names in the bottom line and then select the student to test in the line above. It should be obvious that if you have student names that you do not wish to keep you may delete their names by tapping the appropriate box next to the name list.



## Dealing with Settings

At the bottom of the opening screen as shown above are the boxes with Results, OK, Settings, and Exit. Click on the "Settings" box and it will bring you to this screen:

You should first note that the units of measurement on the right top of the chart should be selected, either SAE (inches) or Metric (cm). Simply check or uncheck to make your selection.

In the columns on the left side are the features of the reporting that you can alter. These come to you in a platform that makes it rather easy to evaluate performance for AHA 2010 standards: 2 minute test length, 100 compressions per minute target value, 2” minimum target depth and a 2.5” maximum depth allowed.

Below the selections are two check boxes labeled “Record Compressions” and “Record Ventilation”. Simply place a check mark in each box that you want to measure. If you wish to do only compressions, check that box and eliminate the check in the ventilations box. If you wish to do full CPR, check both boxes, and if you wish to only test ventilations, check only that box.

Once you are done with the selections, click the save button at the bottom of the page.

The other button to be aware of on this screen is the “Calibrate” button. At this point the manikin should be calibrated correctly and you may skip this feature. If, in the future, you determine that the product is not reporting accurately, you may go back and calibrate the system. Instructions on how to do that will be noted later in this pamphlet.

When you select a student from the above drop down list, you will be taken to the action screen. This screen will show you real-time reports of what is occurring during the student’s skill performance. At the top of the screen the teacher and the student names show up and the unit of measurement is shown, too.

Just above the action chart area are definitions of the Window time in seconds and the overall test time in seconds. When the student starts to do compressions, the chart will show the activity in relation to the skill level. In the case presented so far, the screen will change every ten seconds and in the end there will be six screens that show up on the report document. At the bottom of the screen are the total test skill measurements for either compressions or ventilations.

In order to start the recording process you simply click the “Start” button once. You may, of course, cancel the selection. Once you click the “Start” button the program waits for the student to do the first compression or ventilation, depending on what you chose to measure. Again, the student will see in real time what he/she is doing at that time. This is a good way for the student to learn how to do good CPR. In a test situation you would turn the computer screen away from the student and they will have to perform “blind” compressions or ventilations.

When the appropriate time has passed, as defined in your settings and in this case 2 minutes, the resulting charts pop up so you can see the skill proficiency. The “Next” and “Last” buttons allow you to scroll through the screens to see how the student did in each segment of his test.

The graphic below is an example of a 2 second test of ventilations.



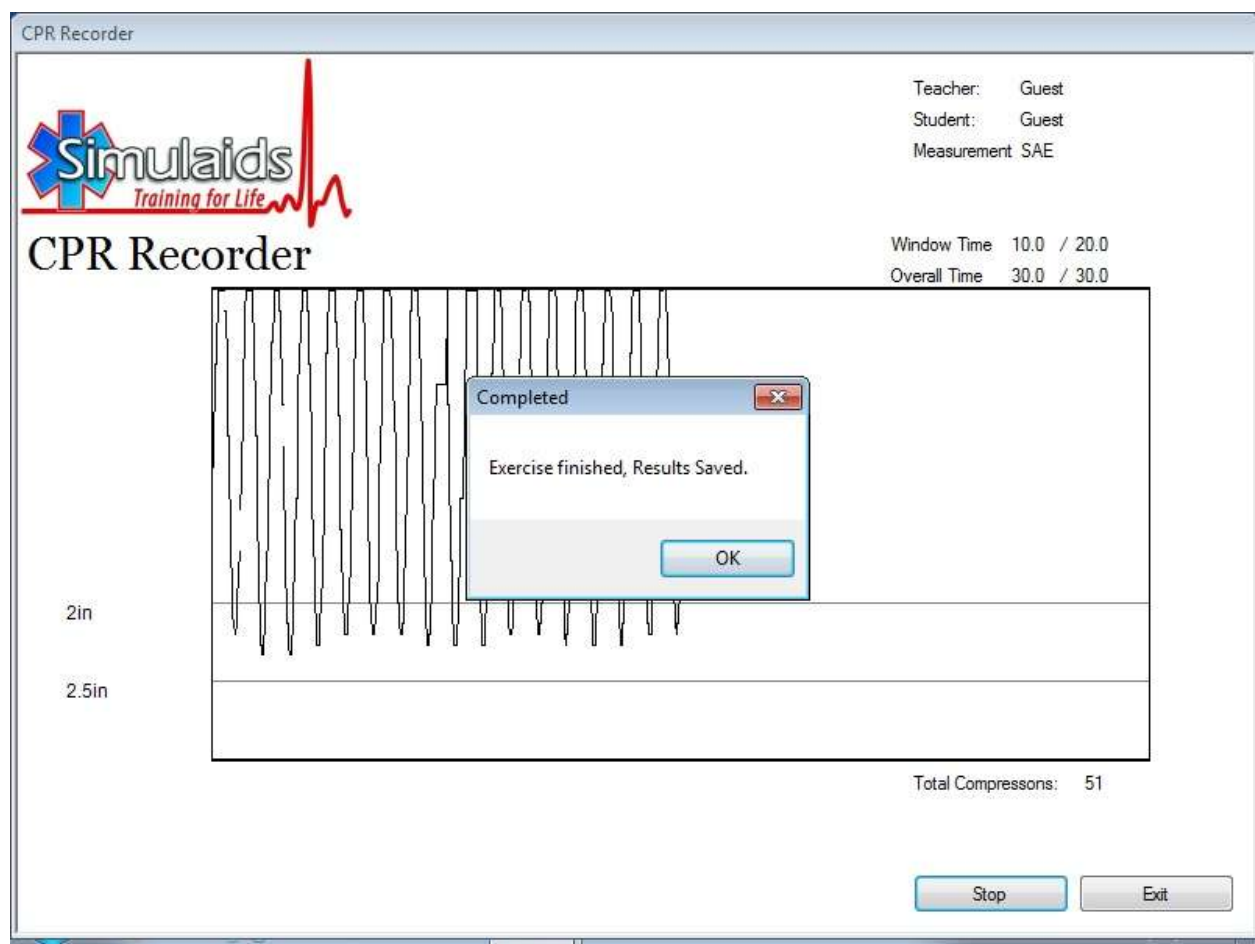
The measurements of the chosen parameters start as soon as the individual begins their compressions (in the case of CPR or compressions). If you have selected ventilations, the program begins recording at the time of the first ventilation. NOTE: if you use a BVM rather than rescue breathing, you will not have to change the lung system. However, if you use rescue breathing, the lung will be contaminated and you must change it at the end of the day. See the changing instructions later in the manual.

The individual must continue their skill applications until the time allotted ends. In other words, if you use the one-minute setting, the CPR must be performed for at least one minute so that the skill is adequately recorded over a minute's time.

At the end of the allotted time, the product stops recording and automatically posts the percentage of success compared to the settings.

For instance, if you are running a test of compressions for one minute and the individual did 100 compressions during that minute at 2+ inches of depth, then they will be assigned a 100% score. If their depth of compressions remains over 2", but their rate equals 95, their score will be 95%. The new standards indicate that there is only a minimum rate of 100, so any rate over that will result in a score of 100%.

Below is a sample of what occurs at the end of a test. In this case, the test duration was 30 seconds (0.5 minutes) and 20 seconds worth of screen shots was selected so that there is better definition of the compressions relative to resting, depth and rate.



Clicking the OK button reveals the test score of 100% in the same area of the screen.

It is not necessary to change the parameters each time you instruct a different skill level, for instance healthcare providers vs. lay people. Simply use the higher standard for establishing the settings and then

determine what percentage will be considered passing for either group. For example, the lay people may have an expected skill level of 80%, while the healthcare provider is held to 92% or better. This value is to be determined by the instructor and their curriculum guidelines.

Inserting another student's name in the startup screen will allow the next student to be recorded under that instructor's name. Simply click the name and click on the "Start" button. Multiple attempts will be recorded in the chronological order in which they are performed by individuals within that group. You may always create another instructor's name to segregate your groups of students in order to assist you in locating their recording.

Once you have saved a recording or discarded it, simply click on the "Start" button again and that same student has another opportunity to record an attempt.

### **Saving and Printing**

This student's test may be saved or discarded and another recording for this student initiated by simply clicking on the Start button again. Or, if you like, enter another student name.

To print a record for review and distribution, you minimize the CPR Recording program and access a folder on the laptop desktop labeled "CPR Recording". Opening the folder will allow you to see all of the Instructor folders that are created when you name a new instructor. Opening a specific instructor's folder allows you to access each student file. Opening each student file will present the screens for each of the test results and the charts associated with them.

If you are hooked up to a printer and the drivers have been installed on the mini-laptop, you will be able to print them in the normal way by clicking on the Print menu. If you must export the files to a different machine to access a printer, simply save the file you wish to print to a storage medium like a thumb drive and transfer the file to your print capable PC.

## **Shutting Down**

When you complete the recording activity for the day, close the CPR Recording Manikin program by using the “Exit” button at the bottom of the Instructor screen. Or you may exit normally through Windows, which is active behind your CPR Recording Manikin screen view.

You will soon have the standard Windows™ message that indicates that it is safe for you to shut off your computer. After shutting off the computer you may pull the power cord plug.

## **Manikin care and cleaning**

Your CPR Recording Manikin from Simulaids is an electrical/mechanical measuring device. Handle it with care; do not expose it to moisture. Simply wipe the skin with a damp sponge or cloth utilizing a water soluble cleaning agent. Avoid any contact with printed material against the skin because it may cause a permanent stain. A product called Oxy10 has been known to remove ink, but we do not guarantee it. If at anytime you have difficulty with your manikin’s performance, please call Simulaids technical support at 800-431-4310.

## **Mouthpieces and airway**

You have received two mouthpieces with the product, but you may purchase more of them in 10 packs by ordering item number 2023 (2023Export). The lung may be replaced when contaminated, but using a Bag-Valve-Mask (BVM) for airway ventilations will cancel the need for that. If you do need replacement lungs, place your order for part number 2805 (Brad lung).

The face pieces are removed by simply pulling the nose section away from the manikin. Insertion of another face piece is done by placing the nose bridge of the face piece into position and pushing the lower “chin” section into the manikin’s head.

To remove a contaminated lung system, perform the following procedure:

1. Remove the chest overlay skin by loosening the Velcro straps located on the back of the manikin.
2. Remove the face piece
3. Pull the clear plastic retainer away from the manikin head. Take care to not damage the air tube attached to the retainer.
4. Gently lift the chin of the manikin to access the one-way-valve that is connected to the proximal end of the lung system. Pull the one-way-valve assembly out of the head.
5. Remove the air tube assembly connector from the small port on the one-way-valve assembly.
6. Discard the contaminated lung.
7. Place a new lung system on the chest of the manikin being sure to turn the one-way-valve so that the port opposite the lung system is oriented toward the back of the manikin; this leaves the active side of the airway system toward the face of the manikin.
8. Reattach the air tubing connector to the vacant small port on the one-way-valve. A slight twisting motion will assist in making the connection.
9. Insert the new one-way-valve into the hole in the manikin's face.
10. Reinstall the face side retainer over the protruding one-way-valve port.
11. Install a clean face piece.
12. Replace the chest overlay.



All of the components of the CPR Recording Manikin are replaceable. A full list of parts and their cost is available via email from Simulaids at [info@simulaids.com](mailto:info@simulaids.com).

**WARRANTY:** Simulaids warrants this product to be free from defects in materials and/or workmanship for a period of one year from the date of purchase, as evidenced by the date on the invoice of the product shipment to the end user. This warranty expressly does not cover exterior vendor electrical products, abuse, accidental or purposeful damage, or any form of modification to the product. Only products manufactured at the Simulaids plant in Saugerties, NY receive this limited warranty status. All other products sold through Simulaids, but manufactured elsewhere, are subject to the warranties supplied by the product manufacturer. These warranties may differ from the Simulaids' warranty. See the additional Extended Warranty product offering included with this unit.

**EXTENDED WARRANTY:** Item number 4000W

This extended warranty offer must be purchased within 2 months of the date of your delivery invoice. Call your Simulaids distributor to purchase the product. The Extended Warranty covers all of the issues as the Factory Warranty described above for an additional two years, totaling three.

**RETURN POLICY:** Simulaids reserves the right to either repair or replace affected parts or the entire unit, at their sole discretion, after investigating and reviewing the actual product and the damage. In most instances, a digital photo of the product in question showing the damage will help qualify a product for return to the factory. At no time will any product be accepted without proper return authorization issued by Simulaids. Please contact our Customer Service Department to arrange a return and obtain a RGA number. Freight and Shipping charges are the sole responsibility of the end user. No product will be received with shipping charges due. Serial number and invoice number from the agency through whom the product was purchased must be provided for warranty repairs. No return authorization number will be provided without this information. Should you have any questions or wish further information on any product we manufacture call or write our Customer Service Department.



 Simulaids



 Simulaids

**16 Simulaids Drive  
Saugerties New York 12477  
(845)-679-2475 Toll Free: (800)-431-4310  
Fax: (845)-679-8996  
[www.simulaids.com](http://www.simulaids.com)**